



Undergraduate Prospectus **2024**

# Contents

## Medicine at BSMS



← 07  
Preparing  
you for  
medicine

13 →  
Developing  
you as  
a doctor



## Life at BSMS



↑ 20  
A home from home



← 22  
Join the  
club

Out and  
about  
24 ↓



---

Useful information

28 →  
Fees and  
funding



↑ 30  
What  
qualifications  
do I need?

→ 34  
How will  
my application  
be processed?

---

**Welcome**  
from the Dean,  
Professor Malcolm Reed



# Who you are

A caring individual who shares our commitment to providing outstanding and compassionate healthcare.

Entry requirements

---

## BMAT

In year of application

---

## AAA

A-levels  
(including Biology & Chemistry)

---

## AAB

Contextual data  
(including Biology & Chemistry)

---

## 36pts

Total in the International Baccalaureate  
(including HL Biology & Chemistry)

---

# Who we are

A modern, inclusive and innovative medical school with a real sense of community.

## 199

students started with BSMS in 2022

---

## 27%

of our UK students meet our widening participation criteria

---

# What we can offer

If you're looking for modern medical training that stretches you to your limits and supports you to push beyond them, allows you to relax in rural tranquillity and to experience the adrenaline rush of early clinical experience, look no further than BSMS.



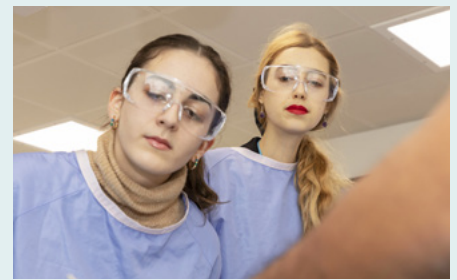
## Systems-based approach

You will take a bodily system, such as the circulatory system, and learn all relevant anatomy, physiology, biochemistry, pharmacology, pathology and clinical skills.



## Early clinical experience

You will have placements in GP surgeries and hospitals from week two, building your confidence and communication skills with patients and healthcare professionals.



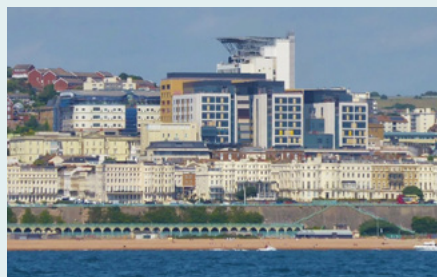
## Cadaveric dissection

Cadaveric dissection is a key part of the course, giving you a real understanding of human anatomy, along with prosection, living anatomy and ultrasound sessions.



## Location

You will be based in Brighton & Hove, an exciting, vibrant, inclusive seaside city, nestled at the foot of the South Downs and only an hour from London.



## New teaching hospital

Opening in Spring 2023, the redeveloped Royal Sussex County Hospital in Brighton will provide outstanding clinical and learning facilities.



## Two university partners

As a student of both the University of Brighton and the University of Sussex, you will benefit from access to the academic and recreational facilities of both.



# Medicine at BSMS

- 07  
Preparing you  
for medicine
- 13  
Developing you  
as a doctor

# Preparing you for medicine



Learning anatomy at BSMS is an exciting fusion of laboratory-based human cadaveric dissection and prosection sessions with applied living anatomy and the latest live ultrasound sessions. At BSMS, we ensure that students not only have the core knowledge of the human body, but are effective at applying that knowledge in the diagnostic and surgical domains.



Professor Claire Smith



Our five-year medical degree, awarded jointly by the Universities of Brighton and Sussex, leads to the qualification of Bachelor of Medicine, Bachelor of Surgery (BM BS). The course is designed to help you become a highly competent, strongly motivated doctor, committed to the highest standards of clinical practice, professionalism and patient care.

## How is the course organised?

### Years 1 and 2

#### Systems-based approach

You will study the normal and abnormal functioning of the human body using a systems-based approach, with integrated modules covering the core biomedical and psychosocial sciences.

#### Clinical skills

You will start to develop clinical skills in history taking, physical examination, diagnosis and effective communication with patients in a classroom setting and by gaining real life experience in primary, secondary and community care placements. Clinical skills in Year 1 will also cover basic life support, first responder principles and simulated home visits.

In Year 2 you will continue to build on the clinical skills taught in Year 1, covering venepuncture and phlebotomy, intermediate life support and the initial assessment of patients in different settings (eg, the emergency department). You will also take part in four immersion weeks, where you will focus on general practice, learning from allied health professionals and community care teams.

In Years 2 and 3 you will spend time with a person living with dementia and their carer in our award-winning Time for Dementia programme.



#### Anatomy

Your anatomy study will explore the human body and its relevance to clinical practice. This will include a combination of cadaveric dissection, prosection, living anatomy and ultrasound sessions.

#### Student-Selected Components (SSCs)

SSCs allow you to undertake individual study according to your own personal interest, and explore selected topics in depth, informed by the latest research.



Anatomy teaching at BSMS is an incredible privilege, allowing us to uncover the donor's life story through their body. I really enjoy this type of learning as I can get hands on experience of mapping out the human anatomy, and it helps me to better visualise the anatomical knowledge gained in lectures.



Hadiqa Ali  
Year 2





What I enjoy most about studying at BSMS is the early clinical exposure. From the first year, we are exposed to A&E departments and GP practices. In the second year, we get the opportunity to spend time in various departments during immersion weeks throughout the year, giving us a realistic expectation of what the life of a healthcare professional entails.



Alex Dos Santos  
Year 2



### Year 3

#### Clinical rotations

At the heart of Year 3 are ward-based attachments including:

- General Medicine, Acute Medicine and Cardiology
- Elderly Medicine and Psychiatry
- Surgery, including Perioperative Medicine, Emergency Medicine Orthopaedics and Urology

Most students undertake at least one rotation at one of our regional partner hospitals outside Brighton.

#### Teaching

You will consolidate your increasing clinical experience with an understanding of the underlying clinical, pathological and public health issues through weekly teaching sessions in the Scientific Basis of Medicine module.

You will also gain further experience in safe prescribing of medicines, an essential skill for your medical career.



## Year 4

### Clinical rotations

In Year 4 you will take part in a series of five-week rotations in:

- General Practice
- ENT, Ophthalmology and Neurology
- Infectious Diseases, Microbiology and Sexual Health
- Rheumatology and Dermatology
- Oncology, Haematology and Palliative Care
- Obstetrics and Gynaecology
- Paediatrics

The clinical focus in Year 4 is on understanding patients' integrated care and how primary, community and secondary care structures work together for the patient.

Some rotations are delivered by our regional partner hospitals as well as in Brighton.

### Research

You will complete a year-long Individual Research Project, supervised by a university or hospital team.

### Time for Autism

You will take part in our Time for Autism programme, spending time with a family affected by autism, and gaining a greater understanding of this condition.

### Intercalation

You may choose to take a year out of your medical degree study after Year 3 to undertake an intercalated BSc or Masters degree at BSMS or another university. This will provide you with rigorous training in research methods, and may allow you to publish your findings and attend scientific meetings and conferences.



Find out more about  
**intercalated degrees**  
at BSMS

## Year 5

Year 5 provides intense clinical and professional preparation for your foundation years.

### Clinical skills

You will develop your clinical skills through direct patient contact on clinical placements, and by using clinical skills laboratories and simulators.

Your learning will be based on close involvement with routine clinical cases, acting as a member of the clinical team. Spending 15 weeks within one of our placement hospitals, you will rotate through Medicine, Emergency Medicine, Elderly Medicine, Surgery and Psychiatry. Central to your study will be the assessment, diagnosis and treatment of patients in these different areas of practice.



### Preparation for foundation programme

After finals you will join a clinical team at one of our partner hospitals, working closely with junior doctors to complete the preparation for foundation programme module (Foundation 0). This eight-week placement is designed to prepare you for the role of foundation doctor.

### Elective

Towards the end of Year 5, you will undertake an elective period to gain clinical experience in another environment in the UK or abroad.

### Medical Licensing Assessment

You will undertake the General Medical Council (GMC) Medical Licensing Assessment along with students at all other UK medical schools. This comprises an Applied Knowledge Test (AKT) and an Objective Structured Clinical Examination (OSCE) testing all areas of the course.



Find out more about the **Medical Licensing Assessment**

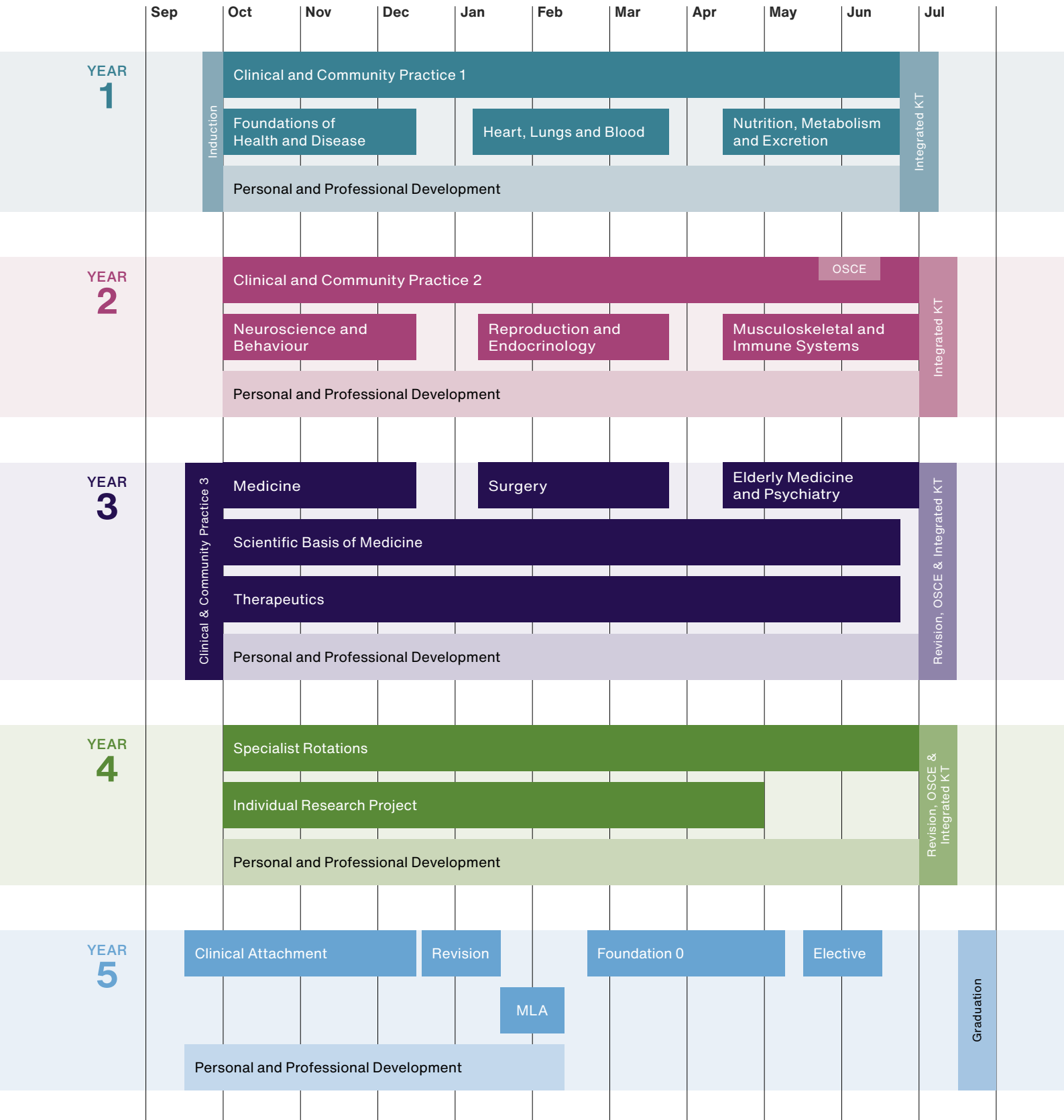
### After graduation

At the end of the undergraduate programme, subject to satisfying fitness to practise requirements, you'll receive your degree, which the GMC has approved as a primary medical qualification (PMQ).



Find out more about **provisional registration as a doctor**

## BSMS curriculum outline



**Key to table:** KT = Knowledge Test; OSCE = Objective Structured Clinical Examination; MLA = Medical Licensing Assessment

**Please note:** the curriculum outline for 2024 has not yet been finalised and may be subject to change. Check at [bsms.ac.uk/undergraduate](https://bsms.ac.uk/undergraduate)

# Developing you as a doctor



I like how the teaching at BSMS focuses on the holistic care of the patient, rather than just the scientific knowledge we need to qualify. The content we cover is designed to make us become the best doctors we can be. For example, the Time for Dementia programme allows us to follow a family affected by dementia for two years, and I feel this has really made a difference to my clinical practice so far.



Enya Costin  
Year 2



At BSMS, our systems-based curriculum offers a range of teaching and learning methods, including early clinical experience, cadaveric dissection and e-learning. We believe in supporting you with relevant technology and learning resources, so you can realise your potential.



### Personal and professional development

Personal and professional development is learnt throughout the five year course. The GMC expects graduates to be able to reflect on and develop all aspects of their practice, and consider how their professional and personal lives intersect and influence each other. With this in mind, each student is assigned a Clinical Personal Tutor who they meet with once per term to get support with the challenges of the course and the practice of medicine.

Taught sessions allow students to explore health inequalities, professionalism, ethics, law, dealing with error, team work, cultural humility, leadership, and quality and safety in the clinical environment.

### Sustainability and healthcare

Teaching on sustainable healthcare is integrated throughout the undergraduate medical curriculum at BSMS and is led by the Sustainable Healthcare group, which is conducting internationally leading research on ways to reduce the environmental impacts of healthcare.

### BSMS learning methods

BSMS has an integrated curriculum designed to develop your knowledge, academic and clinical skills. Our emphasis throughout the degree is on small group academic and clinical teaching, which allows you to further develop and apply your learning from lectures.

Teaching includes practical classes in our anatomy and biomedical science laboratories, seminars, guided individual study, clinical skills practice, technology-enhanced learning and clinical symposia.



### Learning from patients

Patient educators provide a unique patient-centred focus to your clinical training, helping you gain a broad understanding of a diverse range of patients' experiences and the implications of various health conditions and disabilities.

### Learning from peers

Team working is vital in medicine, and we foster collaborative working through group activities and peer-learning throughout the course, with medical and other healthcare students.

### Measuring your progress

Summative and formative assessments occur throughout the course. Along with written assessments, we will test your communication and clinical skills through practical assessment methods such as OSCEs and presentations.

### Feedback

You will receive regular written and verbal feedback on your progress in the classroom and the clinical environment to help you identify your strengths and areas for development. We will also seek and act on your feedback to make improvements to the course.



See a full list of **assessments and their weightings**



### Your participation in research

At BSMS, you will have the opportunity to get involved in a range of exciting research and to develop projects that particularly interest you.

You could participate in research as early as Year 1, in your Student-Selected Components (SSCs). In Year 4, you will conduct a research project under the supervision of a faculty member, joining teams in laboratories, hospitals or the community.

You might choose to investigate biomedical sciences or epidemiology, or assess clinical and community interventions, and may have the chance to present your findings in national and international meetings, or to publish papers in medical journals.

You will graduate with enhanced teamwork, research methodology, technical and project management skills.



## Facilities and resources

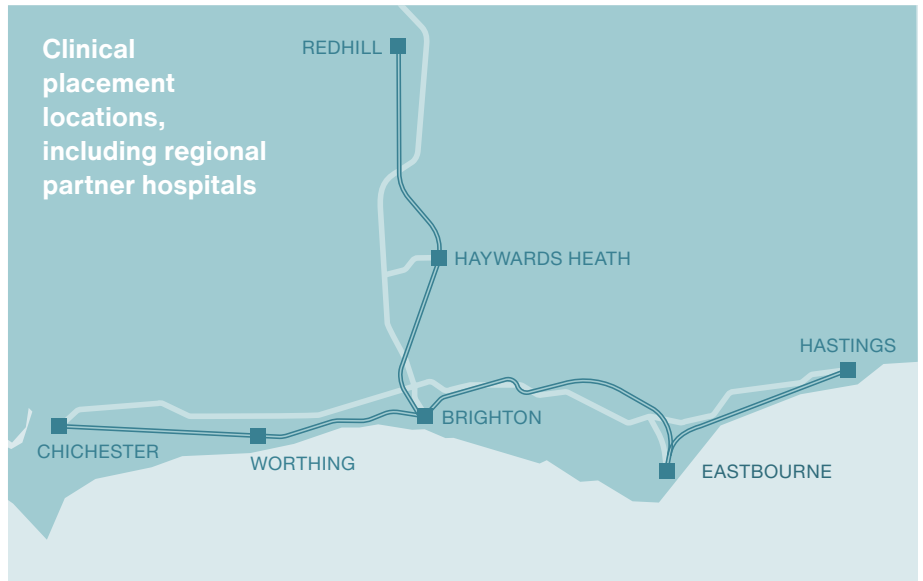
In Years 1 and 2 your studies will be based primarily at both Brighton and Sussex university campuses, which house clinical skills teaching rooms, a state-of-the-art anatomy suite and clinical science laboratories.

From Year 3 you will be based in Brighton at the Royal Sussex County Hospital and across other sites in the region (see map right). Most placements outside Brighton of four weeks or more are residential, to allow you to be fully immersed in the partner hospital team.

## Digital resources

Our online learning platform, My Studies, provides access to all your learning resources and study support tools, including lecture recordings, presentations, quizzes, interactive cases and case-based tutorials.

Clinical placement learning is recorded using an e-logbook app and professional development is supported with a comprehensive e-portfolio. Virtual microscopy and anatomy, and live streaming resources will also support your learning.



## Specialist digital learning resources include:

- The Anatomy Lab Interface, a mobile app that complements learning in the dissection lab
- Capsule, a unique case-based learning resource comprising over 700 clinical scenarios for students to test their investigation, diagnosis and management skills, aligned to the Medical Licensing Assessment
- SmartDrug, a bespoke case-based platform to develop core prescribing skills



I chose BSMS because it provides a healthy learning environment, encompassing both a very lively social life and great support from staff for academic work. The medical school values the student voice and is always striving to provide us with a better quality of teaching.



**Pubudika Punchihewa**  
Year 3

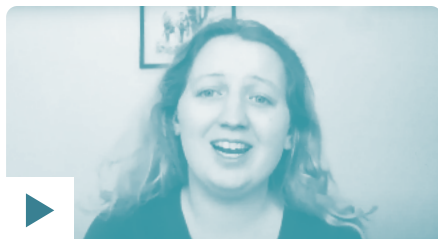


## Support

Medicine is a demanding course physically, intellectually and emotionally, and BSMS offers a wide range of support to help you during your time here.

### Student Advice Team

Our student advisers are dedicated, non-academic staff available for you to discuss any problems that may affect you – personal issues, financial difficulties, health issues and more. They offer confidential listening and advice, and work with colleagues to help reduce the impact of any problems on your studies. They can also identify specialist support if necessary, and put you in touch with other university support services.



### Disability and learning support

For students with physical disabilities, long-term mental health or medical conditions, or specific learning difficulties such as dyslexia, university services are available for advice, guidance and academic or personal support. Such support might include individual support tutors, assistive technology and Learning Support Plans to recommend reasonable adjustments to teaching and assessment.



Find out more about  
**disability and  
learning support**

### Medic families

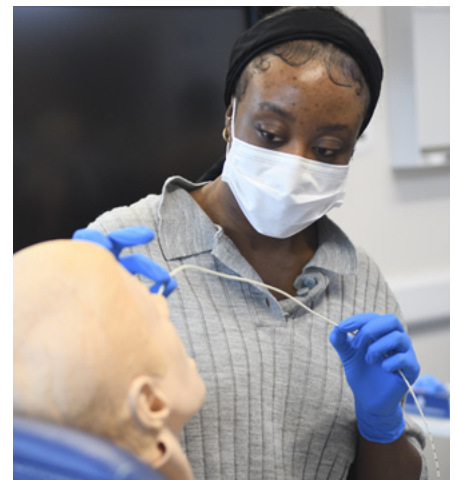
Before you join us, you will be assigned a medic family – this will include 'siblings' (other first years), 'parents' (in Year 2), and even 'grandparents'! They will be in touch before you start, and will help you settle in once you're here.

### International students

There are a diverse range of events at both universities for international students, and student societies can help you integrate into student life here. The University of Brighton international support team provides practical advice and support.

### Other support

Other support available includes financial advice and health services. For more information, contact:  
**[studentadvice@bsms.ac.uk](mailto:studentadvice@bsms.ac.uk)**



# A typical week in the life of a BSMS student\*

## Year 1



### Monday

AM Lectures and tutorials  
PM Lectures

### Tuesday - Clinical practice day

AM Clinical practice lecture  
PM Primary or secondary care placement/clinical skills/small group work with clinical practice facilitators/workshop

### Wednesday

AM Academic skills tutorials/ Student Selected Component  
PM Free time for study and/or extracurricular activities such as sport

### Thursday

AM Symposium – eg, patients come in to discuss how they have been affected by their condition and/or facilitated breakout sessions  
PM Practical class: dissection room, labs, living anatomy, microbiology

### Friday

AM Lectures  
PM Practical class: dissection room/labs/living anatomy/microbiology

## Year 2



### Monday

AM Lectures  
PM Practical class: dissection room, living anatomy, ultrasounds, labs

### Tuesday

AM Student selected component or symposium: eg, patients come in to discuss how they have been affected by their condition and/or facilitated breakout sessions.  
PM Practical class: living anatomy, ultrasounds, labs

### Wednesday

AM Lectures  
PM Time for Dementia/free time for study and/or extracurricular activities such as sport

### Thursday - Clinical practice day

AM Clinical practice lecture  
PM Primary or secondary care placement/clinical skills/small group work with clinical practice facilitators/workshop

### Friday

AM Lectures or tutorials  
PM Lectures

## Year 3



### Monday

Lectures

### Tuesday

Clinical rotations, eg, in General Medicine, Acute Medicine and Cardiology; Elderly Medicine and Psychiatry; Surgery, including Perioperative Medicine, Emergency Medicine, Orthopaedics and Urology.

### Wednesday

Clinical rotations

### Thursday

Clinical rotations

### Friday

Clinical rotations

## Year 4



### Monday

*Individual Research Project (IRP) day* – students work on their IRP/meet with their supervisor/collect data etc

### Tuesday

Clinical rotations, eg, in GP; ENT, Ophthalmology and Neurology; Infectious Diseases, Microbiology and Sexual Health; Rheumatology and Dermatology; Oncology, Haematology and Palliative Care; Obstetrics and Gynaecology; Paediatrics.

### Wednesday

Clinical rotations

### Thursday

Clinical rotations

### Friday

Clinical rotations

## Year 5



### Monday

Clinical attachment (including ward rounds, clinics, lectures and seminars, clinical skills teaching), eg, in Medicine; Emergency Medicine; Elderly Medicine; Surgery; Psychiatry.

### Tuesday

Seminars

### Wednesday

Clinical attachment

### Thursday

Clinical attachment

### Friday

Clinical attachment

\*Draft timetables for 2024

# Life at BSMS

- 20  
A home from home
- 22  
Join the club
- 24  
Out and about



# A home from home

As a first-year medical student, you will be guaranteed accommodation. However, you must make BSMS your first choice when confirming places with UCAS, and submit your application for university residences by the deadline in late June 2024.

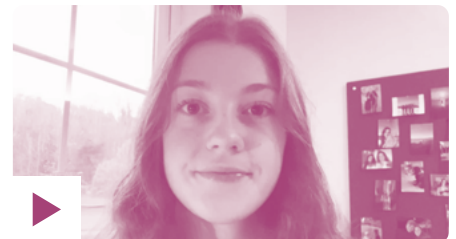
## Halls of residence

In your accommodation, you will be part of a lively, stimulating and cosmopolitan student community, living alongside people from all over the world who are studying a wide range of subjects.

BSMS students are allocated between halls of residence at the University of Brighton and the University of Sussex on a first come, first served basis. All residences have communal kitchens, internet and include contents insurance.

### University of Brighton campus

You will normally be placed in accommodation at the Varley Park campus, where both en suite and shared options are available. There is a free University of Brighton bus service and a public bus service to the Falmer campus.



### University of Sussex campus

You will normally be placed in Lewes Court residence, where both en suite and shared options are available.

### Applying for accommodation

You should apply for halls via the University of Brighton Accommodation Office, regardless of which university campus you would prefer. They will send you information on how to apply during the academic year before you arrive at BSMS, including all relevant deadlines. For accommodation costs, see page 29.

Key	
BSMS teaching/research buildings	
Accommodation	
Library	
Bus stop	
Train station	
Train line	

**Approximate walking times**

Falmer Station ▶ Watson Building	8 mins
Falmer Station ▶ BSMS Teaching Building	7 mins
Varley Park ▶ BSMS Teaching Building	32 mins
Varley Park ▶ Watson Building	34 mins
Lewes Court ▶ BSMS Teaching Building	12 mins
Lewes Court ▶ Watson Building	20 mins

**Life on campus**

You can buy anything from a sandwich to a three-course meal on campus. Facilities include shops, cafés, bars, libraries, a laundrette, an arts centre, a post office and sports centres.

**In Brighton**

If you would prefer to live in a house or flat in Brighton for your first year, a wide range of rented accommodation is available.

We encourage students to live locally to Brighton for the duration of their studies. Students may choose to commute from outside the immediate area for personal reasons; however BSMS is not normally able to provide concessions or adjustments to the requirements of the course to accommodate these circumstances. Students who are not resident in the local area are likely to need to source temporary accommodation from time to time to ensure they can meet the requirements of the course.



# Join the club



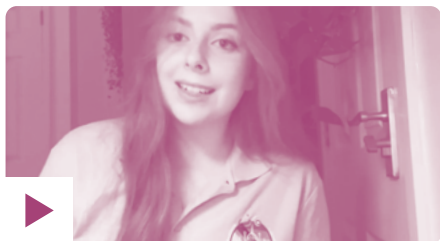
As a BSMS student, there are plenty of activities available for when you are not studying. MedSoc offers a wide range of clubs and societies to get involved with, and you are also able to take part in activities available at both universities. These are a great way to get to know people, and many societies have a thriving social programme alongside their main activities.

### MedSoc

At the centre of student social life is MedSoc, which offers more than 30 clubs and societies. These range from Anaesthetics to Islamic Society, the Paediatric Society to the African and Caribbean Society, and Tea with Terina to the LGBTQ+ society Spectrum.

MedSoc works with both Brighton and Sussex students' unions to organise sports teams and events specifically aimed at medical students, such as balls, cabarets, talks and socials. Depending on your interest, you may have the opportunity to get involved with the BSMS sketch show *Medic Revue* or even organise a national medical conference.

Most importantly you make friends that will get you through the highs and lows of medical school, from practising OSCEs to enjoying a cold drink on the beach after a long day in the hospital. The friends you make in MedSoc are friends for life!



Find out more about **BSMS MedSoc and current societies**



### Sport and fitness

Whether you want to keep fit, dance or are into serious sport, there are excellent sports facilities at Falmer campuses including sports halls, fitness and dance studios, exercise classes, squash and tennis courts and football and rugby pitches.

There is also a wide range of competitive sports teams at BSMS, with most taking part in local or regional leagues. Every year MedSoc organises a varsity weekend with Southampton, which is a sports competition between all the different MedSoc sports teams. The medical schools take turns hosting a day of matches followed by a social in the evening, where you can get to know some of your future colleagues.

### University clubs and societies

As students of both universities, you not only have MedSoc, but you have access to all sports and societies at both the University of Sussex and the University of Brighton. Both student unions run all sorts of political, creative, social and sporting events throughout the year and provide a great opportunity to get out of the medic bubble and meet new people.



Find out more about **Brighton Student Union**



Find out more about **Sussex Student Union**



**I grasped the opportunity to immerse myself into the culture at BSMS and am part of societies at the medical school and both universities. I also play American football for the Sussex American Football team, which gives me a break from medicine and an opportunity to refresh and see different aspects of university life.**



**Julian Okorocho**  
Year 2

# Out and about

Year 4 student Fernanda Widdowson gives an insider's guide to living and studying in Brighton.



## Headquarters

BSMS sits just outside of Brighton, and is split between two different university campuses. We have the unique opportunity to be part of both universities, which means twice the number of societies and events!

## London by the sea

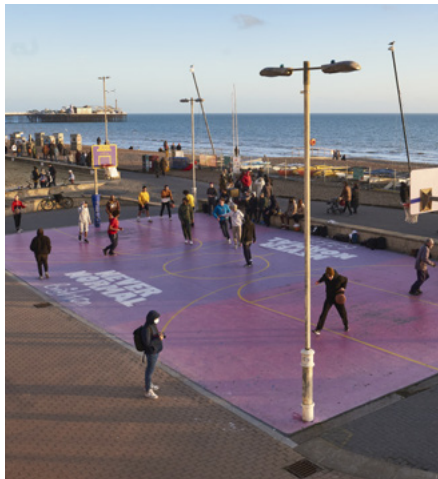
Brighton is filled with colour, from the houses to the clothes people wear, and with its beach and historical buildings, it's no wonder the city attracts visitors.

With a wide variety of shops, restaurants and activities, the individuality of Brighton is apparent at first glance. Between the quirky North Laine with its independent and eclectic shops and cafes, the marina with its bars and restaurants and the Royal Pavilion, there is something for everyone.

As for events, keep an eye out for Brighton Festival and Fringe, Pride, the Lewes Bonfire Night and the Boundary music festival, to name a few.







### More than seashells by the seashore

As you walk along the beach, you're met with volleyball, bars, zip-lining, fire spinning and of course the iconic pier! Out on the sea, you'll see a plethora of paddleboarders, kayakers and windsurfers. When it's warm you can find many Brighton residents and tourists enjoying a day on the beach, followed by some evening socialising. For many of us living here, simply looking at the sea can be a remedy for a tough day.

### Painting a picture – the Brighton art scene

Art surrounds you in Brighton. For a dive into the performance art scene, try venues like Komedia, the Old Market and the Dome. Also, keep a look out for smaller venues to immerse yourself in the wide variety that Brighton has to offer!

### When the sun goes down

Brighton's bustling nightlife doesn't disappoint. Clubs, bars and pubs of every size and style are just a part of what makes up the late-night activities that give Brighton its reputation, along with great live music. And affordable student deals mean you'll never be without something to do!





### **Change of scenery**

If you're looking for a change in pace, a stone's throw from campus you'll find the South Downs. Perfect for walks, hikes and bike rides, or head for a nearby village for a pub lunch.

### **Big city sights**

If you fancy getting out of Brighton, in a little over an hour by train you can find yourself in the middle of London for a day out! If you're itching for a trip slightly further away, London St. Pancras is 1.5 hours away, Gatwick airport is 25 minutes away, and Heathrow 2 hours by coach.

# Useful information

- 28  
Fees and funding
- 30  
What qualifications do I need?
- 34  
How will my application be processed?



# Fees and funding

Fees and financial support for 2024 have not yet been agreed, and will be posted on our website once confirmed.

Tuition fees for students starting the BM BS undergraduate medical degree in 2023 are:

**UK, Channel Islands and Isle of Man students**  
£9,250 per year<sup>1</sup>

**International students (including EU)<sup>2</sup>**  
£42,000 per year<sup>3</sup>

- 1 Fees are subject to UK Government confirmation and to regulatory approval, and may change throughout the period of enrolment on the course as the Government reviews fee levels: [gov.uk/student-finance/new-fulltime-students](https://www.gov.uk/student-finance/new-fulltime-students)
- 2 EU nationals with settled or pre-settled status under the EU Settlement Scheme may be eligible for student funding.
- 3 In subsequent years, fees for international students who start in 2024 will rise by 7% per year.

Money can be a concern when going to university. At BSMS, both school and university staff have help and advice to offer.

## Financial support

To assist new full-time home (UK) students studying for their first degree, a range of financial support is provided by the UK Government:

- You can apply for a Tuition Fee Loan to cover your tuition fees in full, which you only start to pay back when you are earning over a certain threshold.
- You can apply for a partially means-tested Maintenance Loan to help towards living costs such as food and rent.
- If you are a parent or a carer, other means-tested financial support is also available, including a Parents' Learning Allowance and a Childcare Grant.

See [gov.uk/student-finance](https://www.gov.uk/student-finance) for further information on government funding for students normally resident in England.

If you live in Scotland, Wales or Northern Ireland you will be offered a different package of support – please refer to the respective funding bodies:

- [saas.gov.uk](https://www.saas.gov.uk)
- [studentfinancewales.co.uk](https://www.studentfinancewales.co.uk)
- [studentfinancenir.co.uk](https://www.studentfinancenir.co.uk)



## Students with a previous degree

If you are a UK student and already have a degree you may find funding difficult for the BM BS degree, as you will not have access to a Tuition Fee Loan. However, you can apply for a partially means-tested Maintenance Loan to help towards living costs such as food and rent.

From your fifth year of study you may be eligible for an NHS Bursary.

## University of Brighton financial support

The University of Brighton provides financial support to students from lower-income families.

Eligible UK students with a household income of less than £25,000 are entitled to the following in addition to any UK Government support:<sup>4</sup>

- Years 1-4 – a £500 cash bursary in each year of study
- Year 5 – university funding is not available to students in receipt of an NHS Bursary (see below).

The University of Brighton also provides a Care Leaver's bursary and Estranged Student's bursary to eligible students. Sports scholarships are also available.

For general advice and information about student finance, please contact [studentadvice@brighton.ac.uk](mailto:studentadvice@brighton.ac.uk)

For more information about university bursaries, contact the Student Funding Team at [bursaries@brighton.ac.uk](mailto:bursaries@brighton.ac.uk)

Your eligibility will be assessed on the basis of the information provided in your Student Finance application: [gov.uk/student-finance](https://gov.uk/student-finance)

<sup>4</sup> Figures are for 2023 entry; when available, information on financial support for 2024 entry will be provided at: <https://www.brighton.ac.uk/studying-here/fees-and-finance/undergraduate/uk-students/bursaries/university-bursary.aspx>

## NHS Bursary

From the fifth year of study, you may be eligible for an NHS Bursary. This may include:

- Support with tuition fees
- Grants towards living costs
- Additional help, depending on your circumstances (eg, Dependants' Allowance).

For further information see:

[nhsbsa.nhs.uk/nhs-bursary-students](https://nhsbsa.nhs.uk/nhs-bursary-students)



Find out more about **bursaries and eligibility criteria**

## International students

If offered a place to study at BSMS, you will be required to pay a £3,000 tuition fee deposit when you accept your offer. You will need to ensure that you have the means to cover the cost of your fees and other expenses for the whole five years before you begin your course.

Some financial support is available from the universities. For example, for 2023 entry the University of Brighton is offering an undergraduate scholarship which gives a £2,500 reduction in tuition fees in Year 1. For up-to-date information, please check [brighton.ac.uk/international](https://brighton.ac.uk/international)

## Living costs

Depending on your lifestyle, you may expect to spend the following on rent.

**University halls:** £125 to £176 per week (based on 2023 figures) depending on type of accommodation. Costs include electricity, heating, water rates and contents insurance. Internet access is provided as a campus wide service.

**Shared houses:** Average £135 per person per week (based on 2022 figures).

## Advice on additional funding

The BSMS Student Advice Team and the University of Brighton Student Advice Service offer information and advice on additional sources of funding, money management and debt counselling.

## Other costs

You should factor in certain other costs including:

- a stethoscope (approx £50)
- a laptop computer
- travel, parking etc related to placements and regional attachments
- travel, accommodation and living expenses for your fourth-year primary care placement and fifth-year clinical attachment and elective; placements occur over a wide geographical area.



Find out about **laptop specs, accommodation & travel policy, etc**

## Paid work while studying

At BSMS we provide opportunities for our students to earn money where we can, and students are paid to assist with admissions and open days, and outreach work. The careers services of both universities are experienced in helping students find part-time or vacation work, but please bear in mind that as you progress through the degree, your study will require an increasingly significant time commitment throughout the week, and term times will lengthen.

# What qualifications do I need?

## Entry requirements

### **BMAT**

In year of application

---

### **AAA**

A-levels  
(including Biology and Chemistry)

---

### **AAB Contextual data**

(including Biology and Chemistry)

---

### **36 pts**

Total in the International Baccalaureate (including HL Biology and Chemistry)

---

### **35 pts Contextual data**

Total in the International Baccalaureate (including HL Biology and Chemistry)



We are looking not only for academic ability but also for the personal qualities that people need and expect in a good doctor.

In selecting our students, we look for:

- academic achievement and potential
- a realistic attitude to medical training and clinical practice
- an understanding of the NHS values and the ability to reflect upon their importance
- a commitment to quality of care, compassion and improving lives
- the ability to communicate and work effectively in a team for the benefit of patients
- the ability to appreciate other people's point of view
- an appreciation of the need to treat people with respect and dignity
- a willingness to accept responsibility
- a resilient all-rounder who can demonstrate a number of skills and attributes.

### BioMedical Admissions Test (BMAT)

We require applicants to sit the BMAT in the year of application in order to be considered for interview. We believe that the BMAT allows applicants to put themselves in the spotlight; if you have the ability and talent to succeed in medicine, then the BMAT gives you the perfect opportunity to show us, regardless of your background.

We score the BMAT out of 37, with minimum scores required in each section of the test, then rank all applicants according to their total score, working down the rankings to fill our interview places.

The cut-off score for interview varies each year. For more info on how we score this section and this year's cut off dates see: [bsms.ac.uk/undergraduate/applying-to-bsms/entry-requirements.aspx](https://bsms.ac.uk/undergraduate/applying-to-bsms/entry-requirements.aspx)

Please refer to the BMAT website [admissionstesting.org](https://admissionstesting.org) for key dates and additional information.



### Literacy and numeracy

Applicants must have qualifications in English and Maths equivalent to at least GCSE grade 6 or an IELTS score of 7.0 or above with at least 7.0 in each section. For applicants with contextual data, we will accept GCSE grade 5.

International students who do not speak English as a first language must hold a qualification in English language received within the three years prior to their BSMS enrolment date.



### Third A-level

We do not specify the nature of the third A-level subject and we strongly encourage applications from students who study humanities or the arts (including Psychology), as we recognise their value in broadening academic horizons.

### Contextual data

BSMS is committed to widening participation into medicine, so along with assessing your academic profile, we will also be looking for any contextual data that may enhance your application.

If you are identified as having any two of the following key pieces of contextual data, your application will be considered separately from other applicants'. For such applicants, we will accept AAB at A-level (including Biology and Chemistry); 35 points total in the International Baccalaureate (including Higher Level Biology and Chemistry); and English and Maths at GCSE grade 5.

We aim to offer 30% of all interviews to students identified as having contextual data. Applicants who are (or have been) looked after in local authority care for more than three months from the age of 11 will automatically be invited for interview, subject to satisfying academic criteria.

To find out if you are eligible for our criteria please visit: [bsms.ac.uk/undergraduate/applying-to-bsms/entry-requirements.aspx](https://bsms.ac.uk/undergraduate/applying-to-bsms/entry-requirements.aspx)



### Other equivalent qualifications

We also welcome a wide range of other equivalent academic qualifications. If you have any queries, please contact [medadmissions@bsms.ac.uk](mailto:medadmissions@bsms.ac.uk)

### Date of qualifications

All qualifications must have been achieved in or after August 2014. BSMS reserves the right to make alternative offers where appropriate.



Find out more about **detailed current entry requirements**

### Graduate entry

Applications from graduates are welcomed. You should hold three A-levels (at least BBB), including Biology and Chemistry, and you should hold, or expect to hold, a first or upper second class science degree that demonstrates an adequate knowledge of Biology and Chemistry.

If you are unsure whether your particular degree meets our Biology and Chemistry requirements, please email copies of your transcripts to [medadmissions@bsms.ac.uk](mailto:medadmissions@bsms.ac.uk) and we will advise you of your eligibility.



### Access to medicine

Access to Medicine courses are an effective way for mature entrants who have not previously studied Biology and Chemistry at A-level or degree level to gain a qualification acceptable for entry into medical school. A pass at distinction level is normally required, along with demonstrated proficiency in both English and Maths, to a minimum level of GCSE grade 6.

Access to Medicine courses are not a substitute for previous poor performance in the relevant areas of science that are needed to study medicine. As such, BSMS will not consider applications from any access to medicine students already holding qualifications in the relevant sciences graded at or below our standard entry requirements.

We will only consider applicants who have completed courses that are recognised by the medical school, please email [medadmissions@bsms.ac.uk](mailto:medadmissions@bsms.ac.uk) to find out if your qualification would be accepted.



### Fitness to practise

We welcome a diverse range of applicants, reflecting the whole of society. All applicants should visit our website to read detailed information on health and criminal record checks in terms of fitness to practise.

Applicants with a disability are urged to discuss with a disability advisor what reasonable adjustments they might require in order to complete the course. Please contact the disability advisor prior to making an application: [disability@brighton.ac.uk](mailto:disability@brighton.ac.uk)

In accepting any offer of a place you consent to incorporation of this notice as a term of contract between you and BSMS. All students are required to abide by the regulations of the University of Brighton and the University of Sussex, which are available on request.



Find out more about **fitness to practise, health and vaccinations**

# How will my application be processed?

## UK students

We expect to have **193 places for new UK entrants, and 10 places for new international entrants, in September 2024.**

UCAS institution code name:  
**BSMS**

UCAS institution code:  
**B74**

Course code:  
**A100**

Your application must be submitted through UCAS ([ucas.ac.uk](https://ucas.ac.uk)) by **15 October 2023.**

### Open days

BSMS open days will take place in Summer 2023, in person and online. These will give you the opportunity to look around, meet students and staff and ask questions.



Find out more about **open days**

### Interviews

Interviews (MMIs) will take place online in early 2024.



Find out more about **admissions and multiple mini interviews (MMIs)**

## Steps in the BSMS admissions cycle



### Step 1

Submit your application to UCAS by 15 October 2023.



### Step 2

Sit BMAT in Autumn 2023 (dates TBC).



### Step 3

Applicants are ranked according to BMAT and top-ranking candidates are invited to interview.



### Step 4

Interviews (MMIs) are held in January and February 2024 for UK students, and February 2024 for international students.



### Step 5

Offers are made to successful candidates.



### Step 6

Qualification results are confirmed by August 2024. Candidates whose results match their offers are confirmed.

# Getting here

## Distance from BSMS

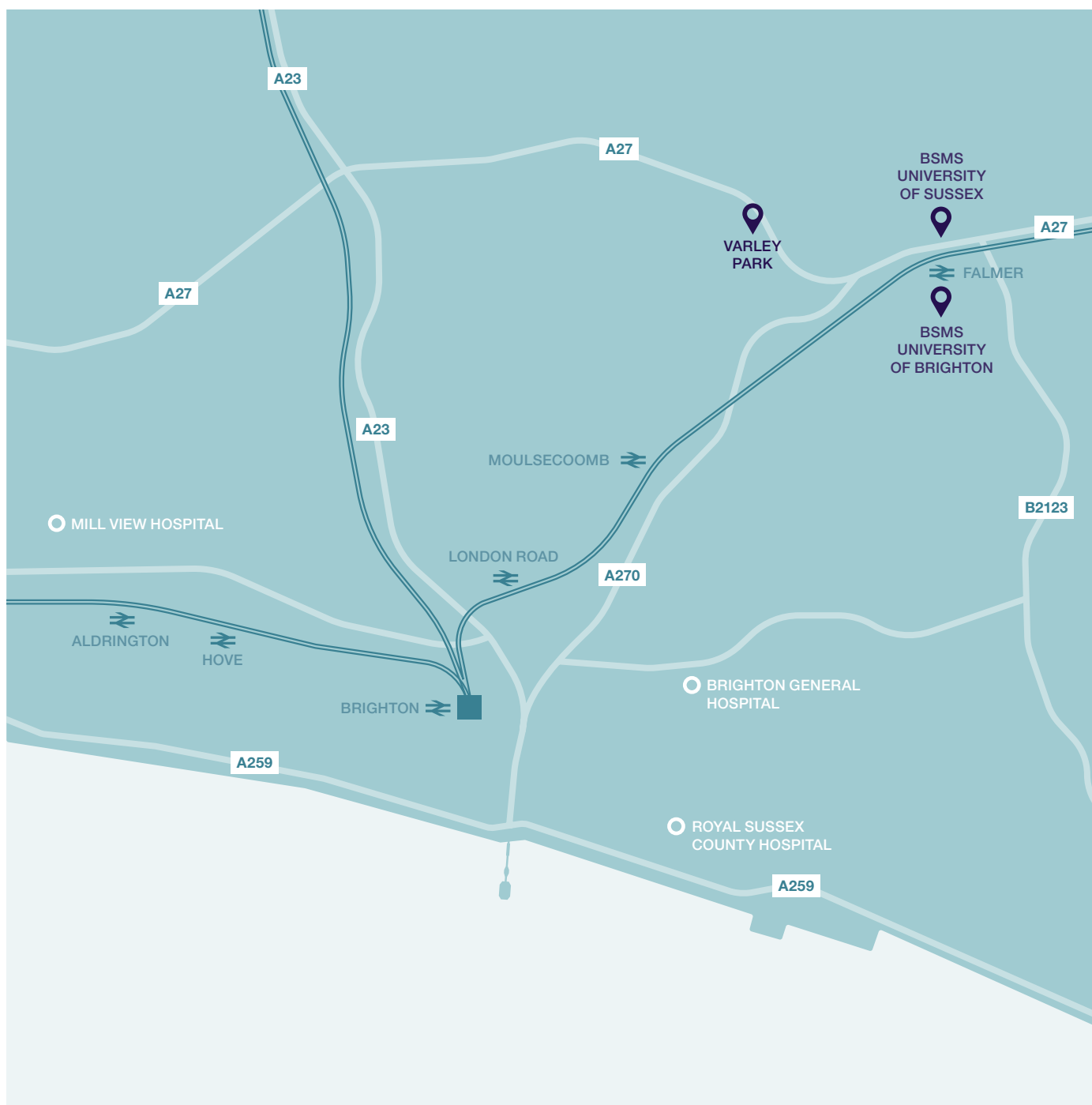
### Central London

Victoria Station: 63 miles / 1 hr 35 min drive / 1 hr 20 min train  
 London Bridge: 56 miles / 1 hr 50 drive / 1 hr 25 min train

**Gatwick Airport:** 28 miles / 35 min drive / 35 min train

**Heathrow Airport:** 63 miles / 1 hr 05 min drive / 2 hr train / 2 hr coach

**Central Brighton:** 4 miles / 15 min drive / 9 min train



See [bsms.ac.uk](https://bsms.ac.uk) for directions

# BSMS

## Useful websites

---

- [Brighton and Sussex Medical School](#)
- [University of Brighton](#)
- [University of Sussex](#)
- [University Hospitals Sussex NHS Foundation Trust](#)
- [General Medical Council](#)

## February 2023

---

Brighton and Sussex Medical School makes every effort to ensure the accuracy of all information in this prospectus. However, at the time of going to press some finer points of curriculum planning and other school procedures remain under development. Any further developments will be shown on the medical school's website: [bsms.ac.uk](https://bsms.ac.uk)

If you can't find the answer you need, please contact:

BSMS Admissions, Registry, Checkland Building,  
Falmer Campus, University of Brighton, BN1 9PH

T +44 (0)1273 643528

[medadmissions@bsms.ac.uk](mailto:medadmissions@bsms.ac.uk)

Twitter: @BSMSMedSchool

Facebook: BSMSMedSchool