

OneSizeFits1 - Every Child is Different

Student engagement Session no.1



BSMS/SameSky creative event 2024

Session Overview

Introducing ourselves

“Individual bodies” drawing exercise

Brief sharing and discussion

The challenge of communicating this research

Overview of personalized medicine and BSMS research

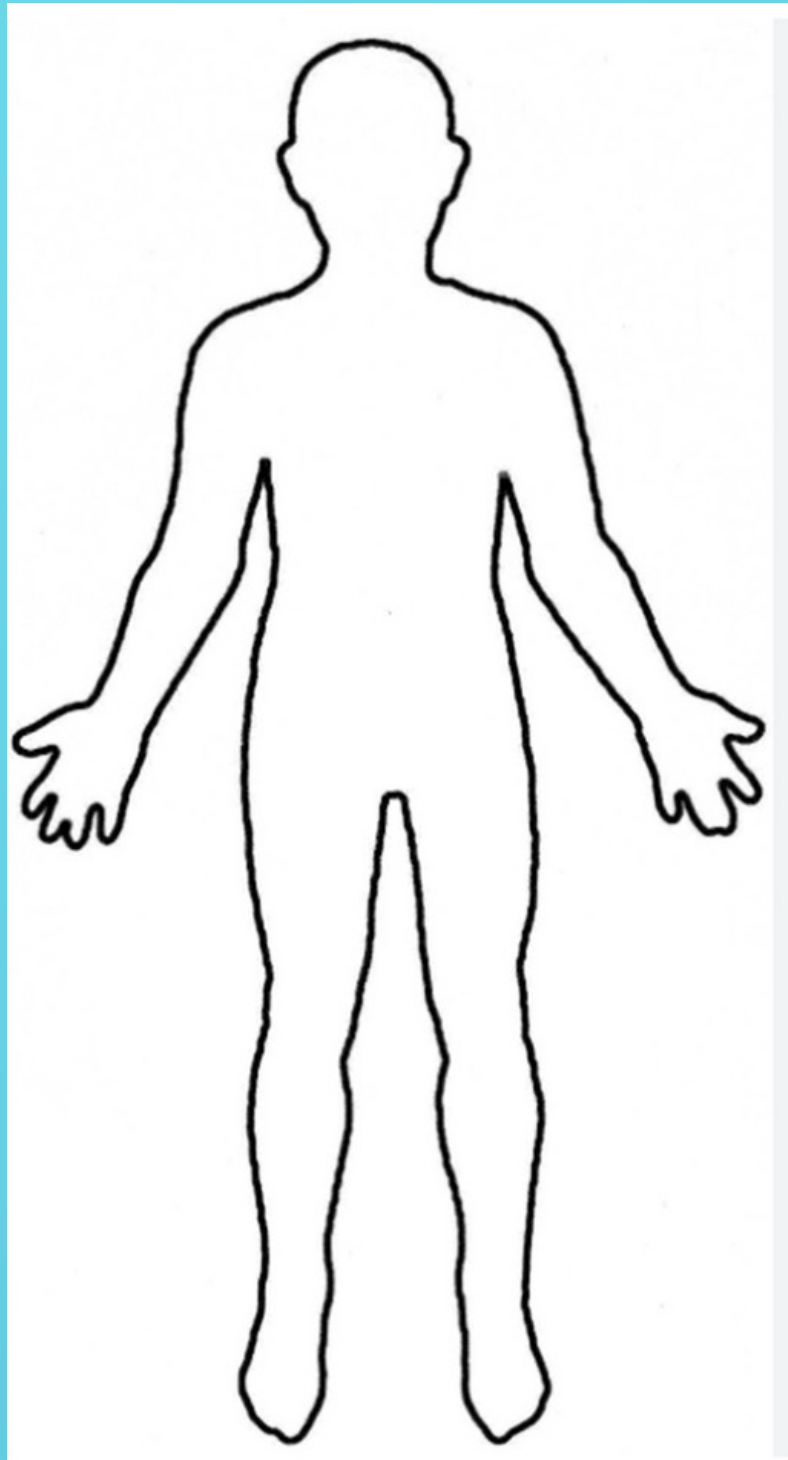
Imagery and communication - discussion

More about our event

Overview of the brief

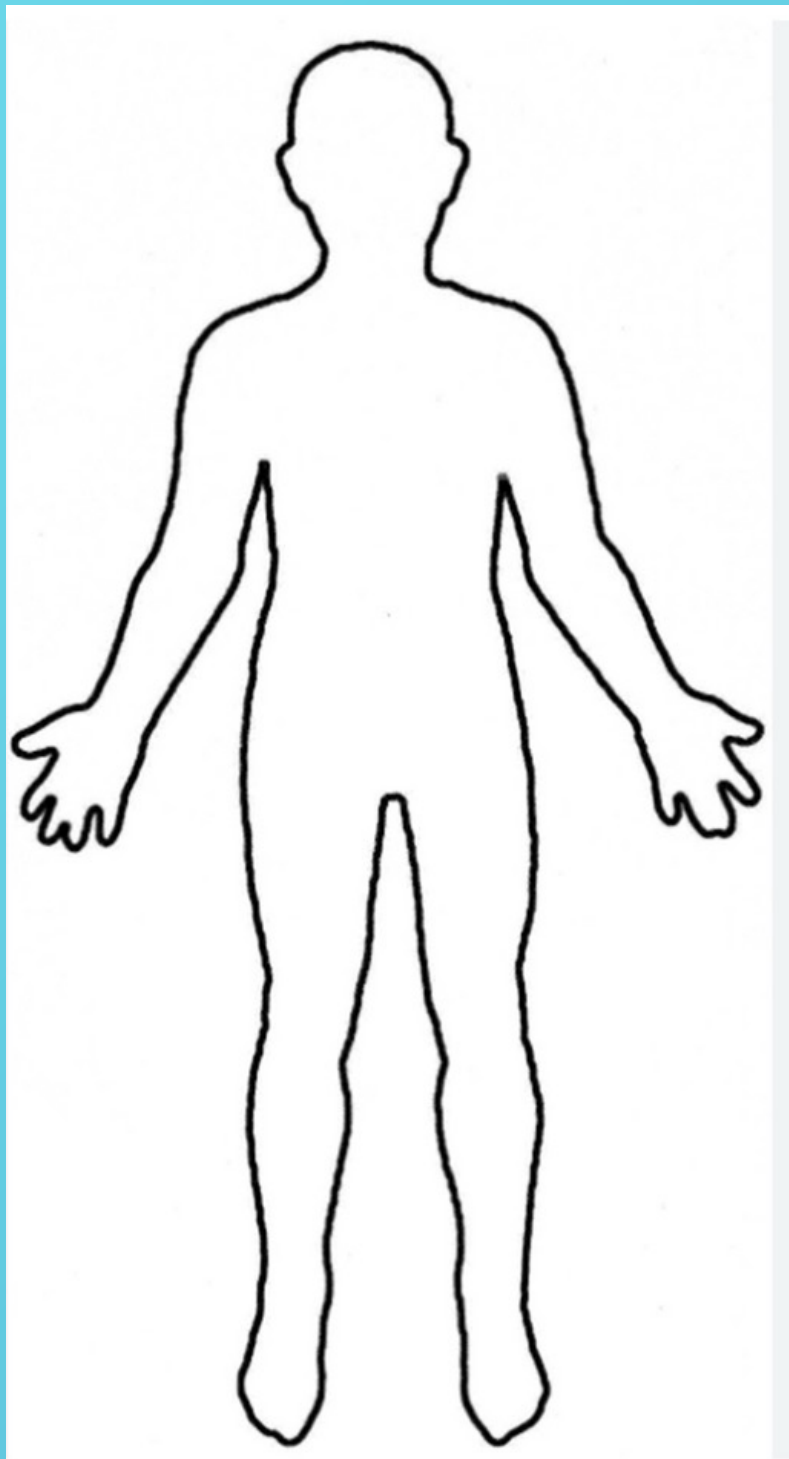
INTRODUCTION ACTIVITY

Find an object close by that can say something about you



**DRAW AN OUTLIN
OF A BODY**

h words, images or other marks, add to your drawing
thing that shows or represents or describes



- What they had for lunch
- A thought they are having
- A feeling or emotion they are experiencing
- Something they are doing now or today
- A problem they are having
- Something or someone they love
- A hope they have for the future

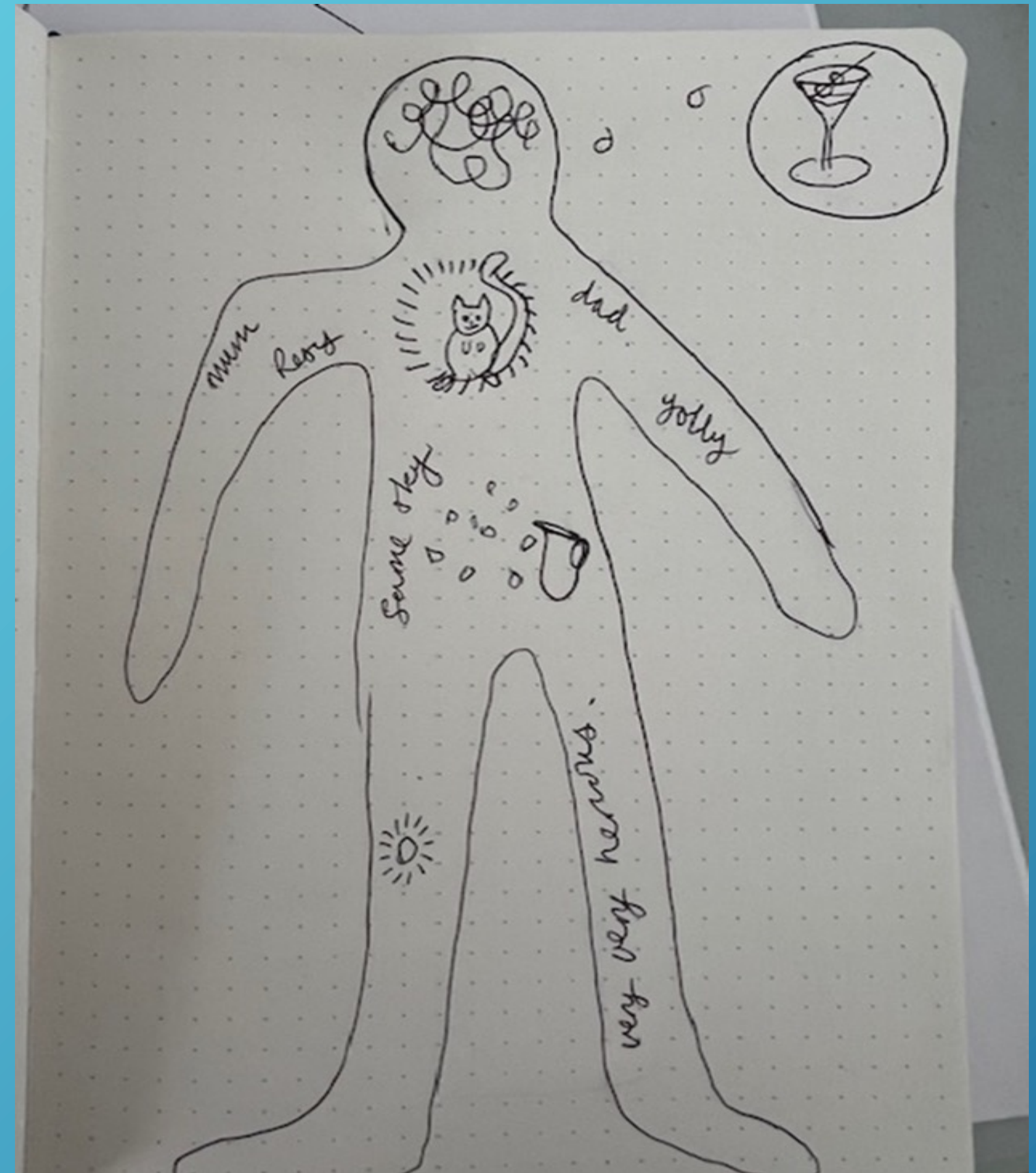
Our example:

I love my cat so I put him here in my art space

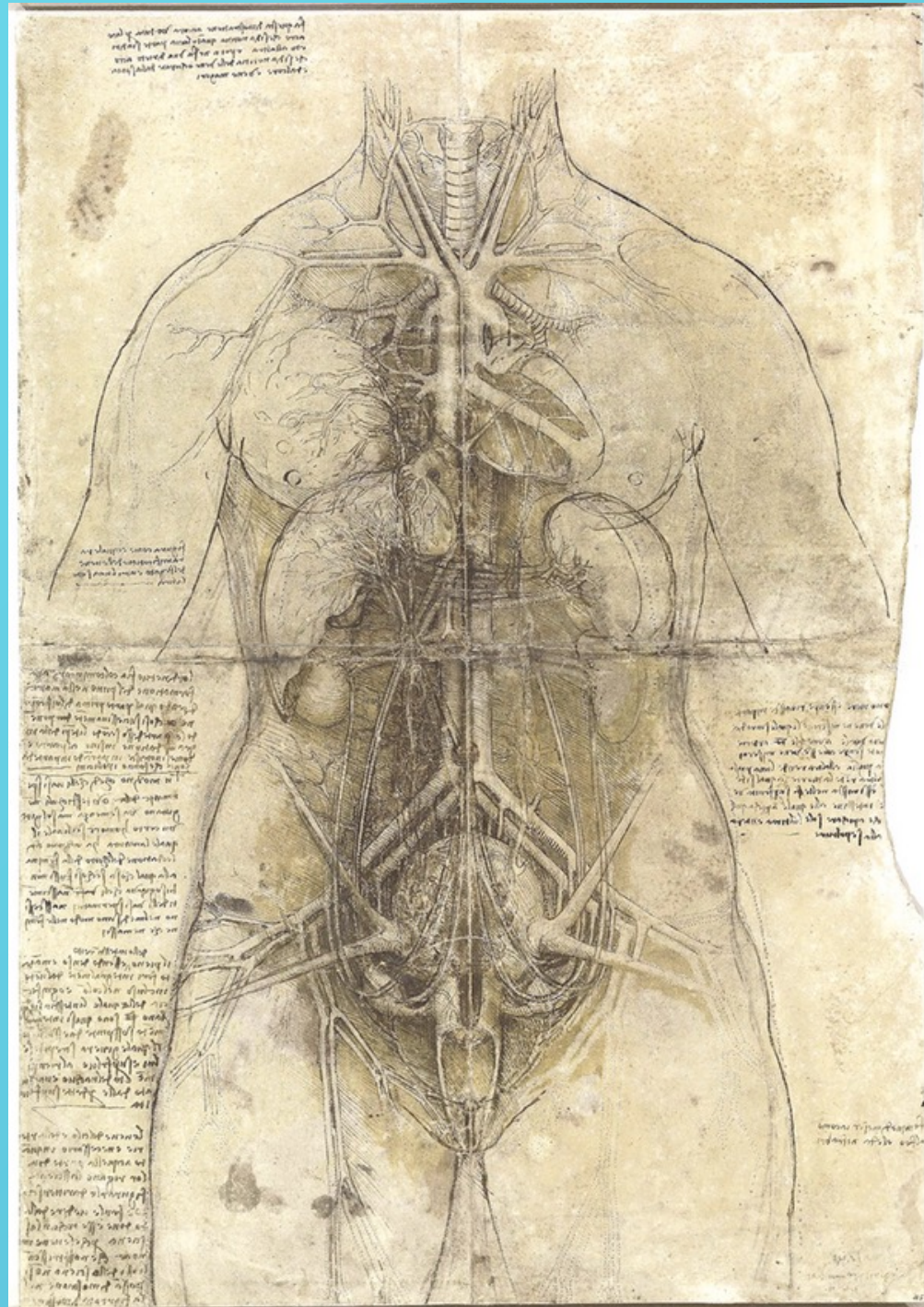
My knees feel wobbly when I'm nervous

The people I love surround my heart

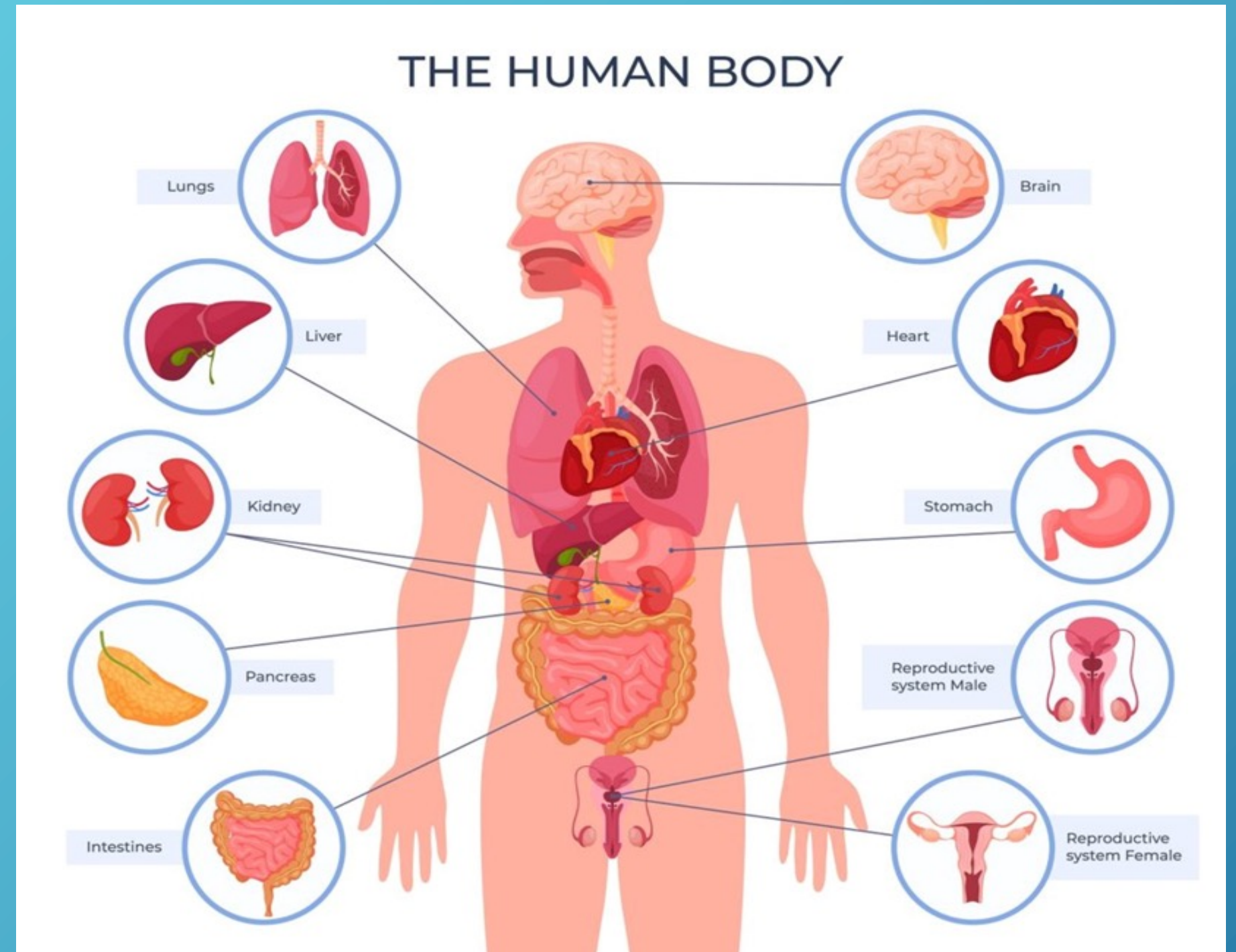
I'm thinking about a lovely G&T later tonight!



re other examples of how art has portrayed the human body,
the first being Da Vinci's work:



o Da Vinci's Anatomical drawings.



Modern artistic depiction of the bodily organs

Lets share

show our body pictures and look at the differences

where have we put the different elements? Where are they
in relation to the body?

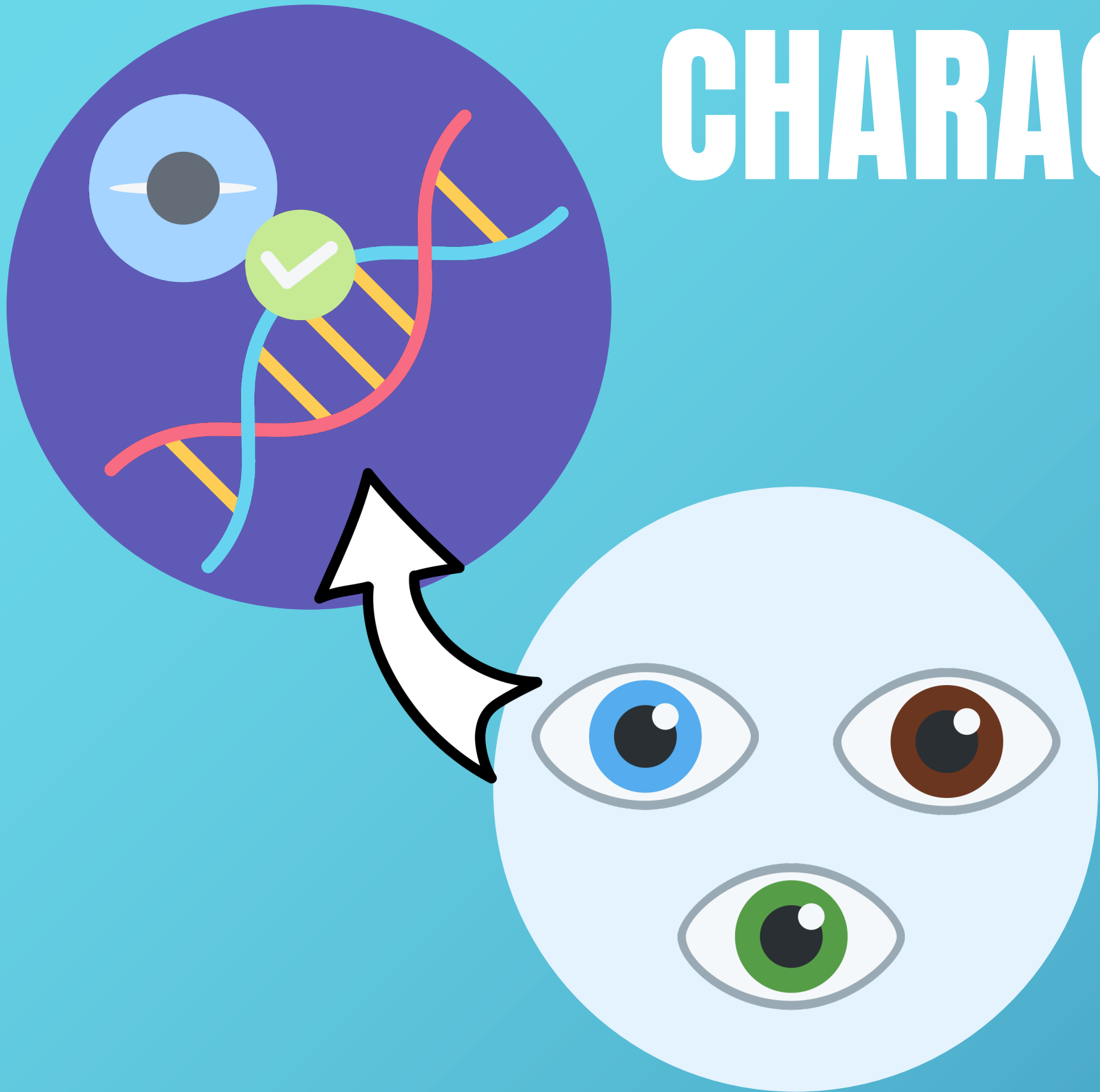
How have we represented them?

WHAT MAKES US INDIVIDUALS?



GENETICS

CHARACTERISTICS

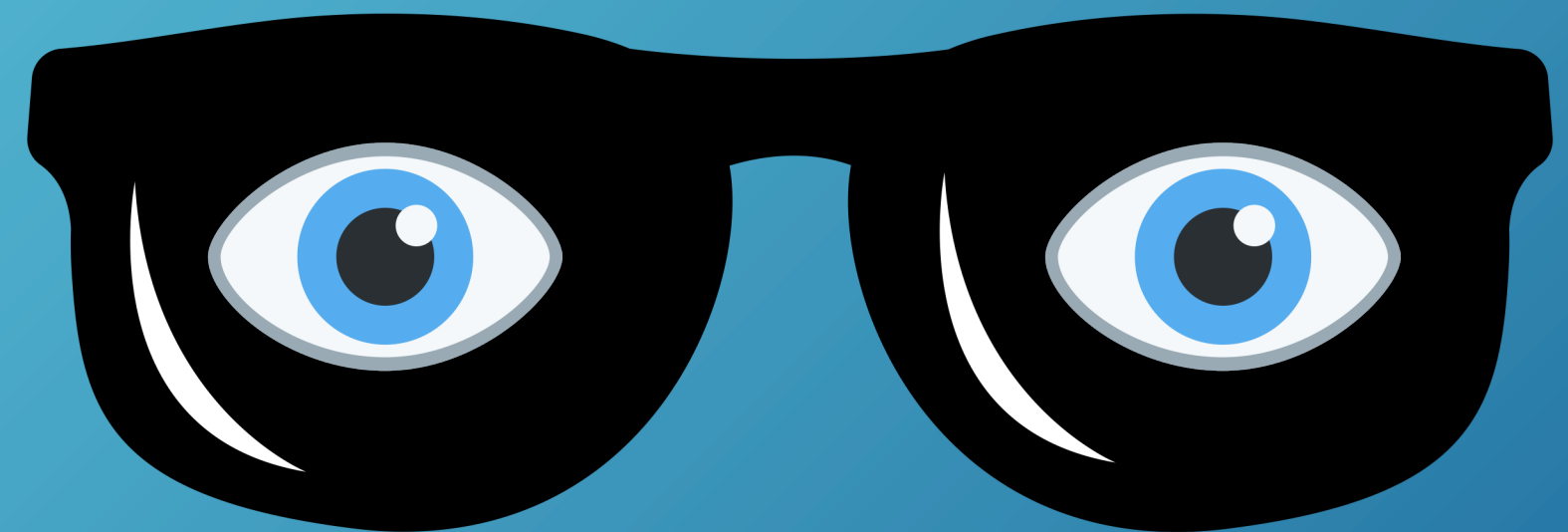


Some of our individual differences such as a physical characteristic determined by our genes

How can this affect out health?

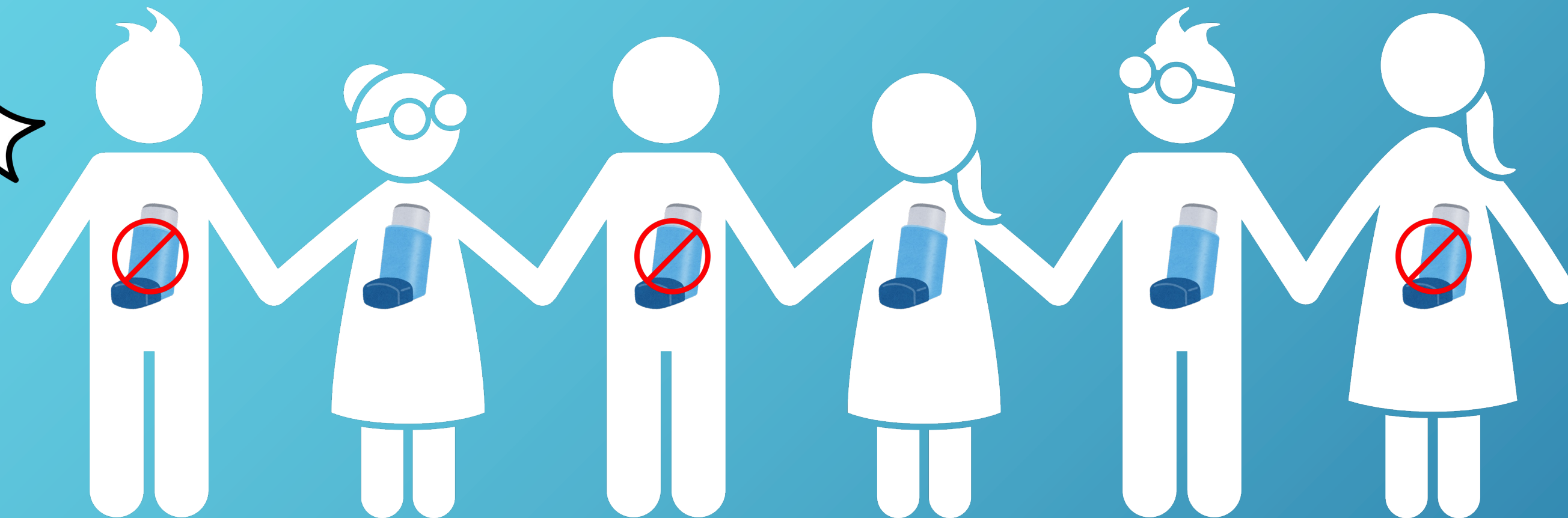
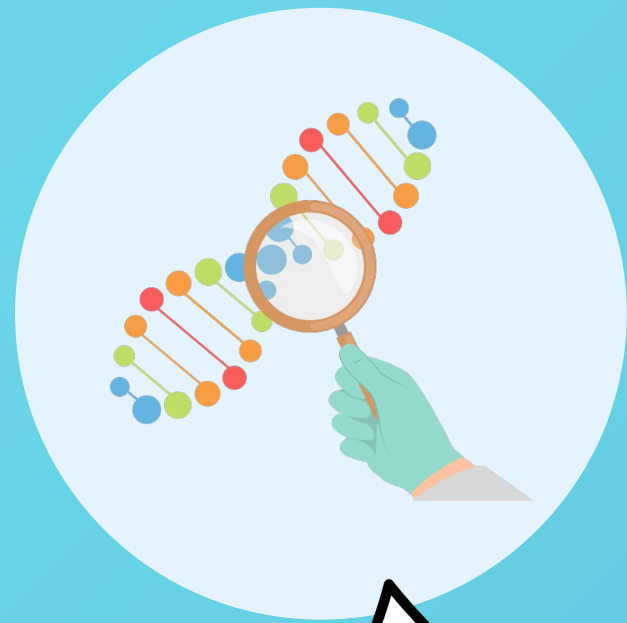
mes the specific characteristics we
can affect the way our bodies respond
nvironment around us.

ave blue eyes, they will be more
e to the sun!



PERSONALISED MEDICINE

Our research looks at why sometimes people respond differently to medication when they are unwell, we look at the factors behind why medication work as well for some people based on their genetics

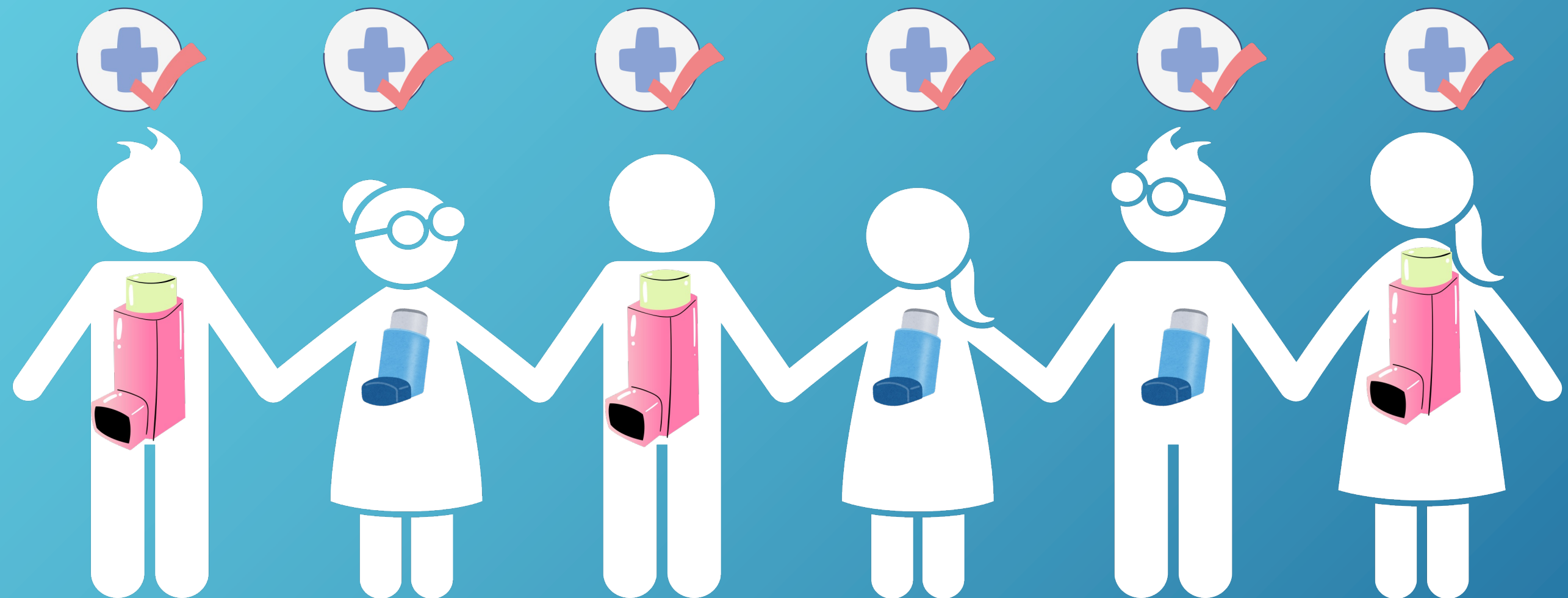


PERSONALISED MEDICINE

use our research to try and find out what medication will work for
people.

understand genetics differences, we can work out what treatments

!



COMMUNICATING THIS RESEARCH

step of this work is to try and communicate this
to the patients themselves!
to educate and raise awareness so that people know
arch can help them or their families.



THE BRIEF

would like you to create an image, text, a video piece that can be included in our exhibition/

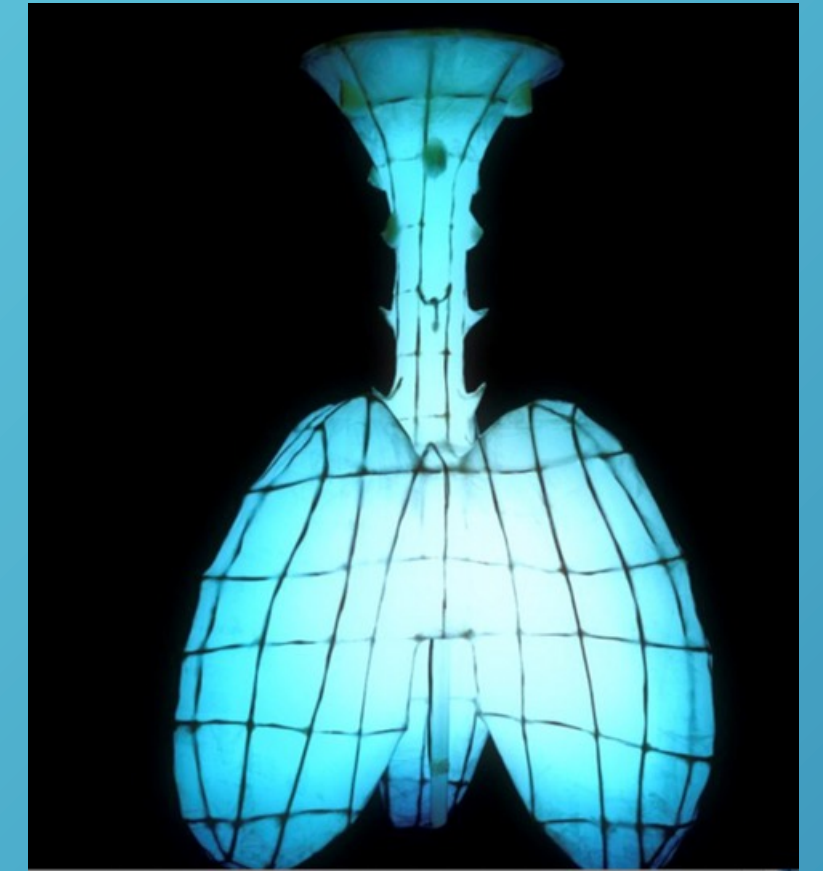
With the title:

What does personalized medicine mean to me

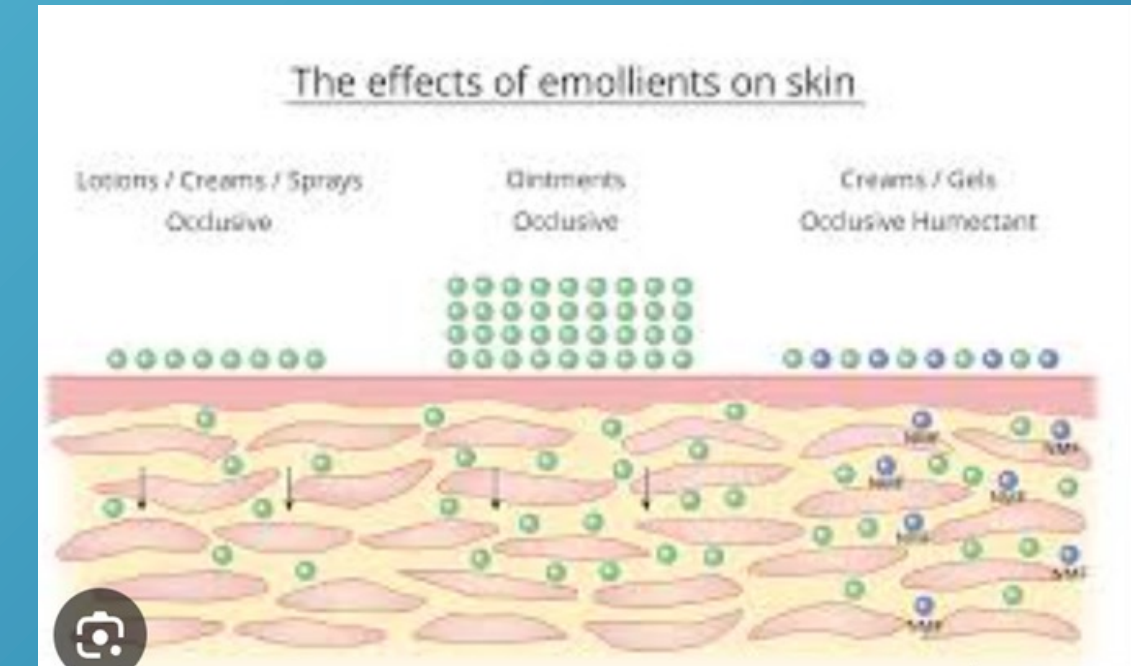
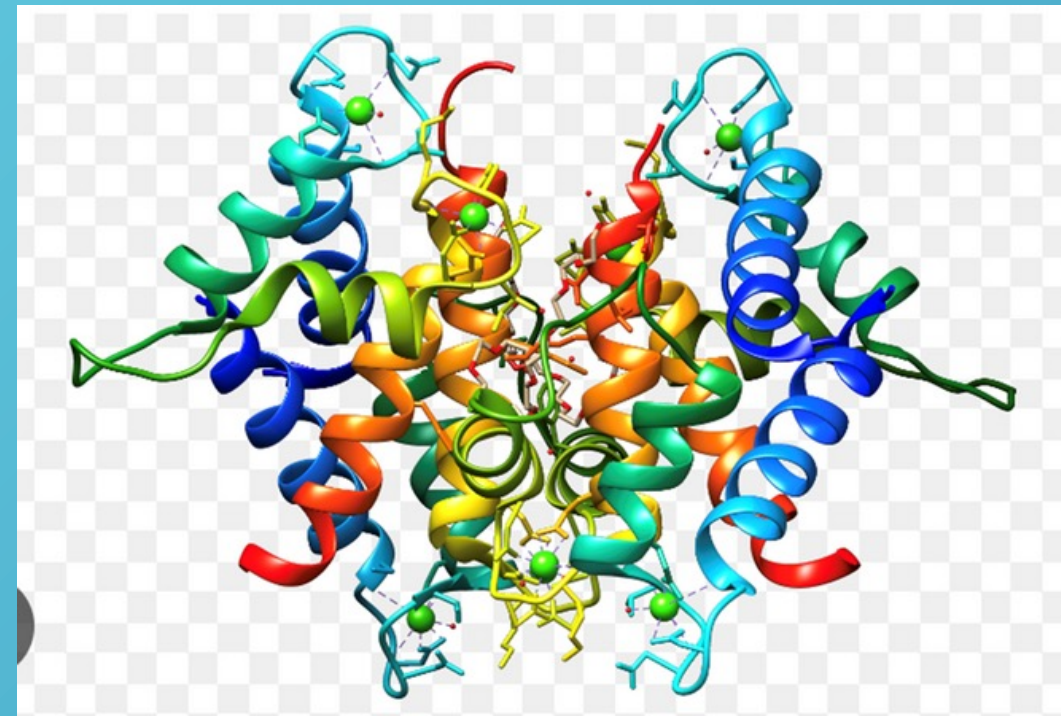
Examples



My throat tickled and itched and I coughed
I felt constricted, inflamed.
My ribs ached.
I did not automatically breathe in and out,
I had to think – keep doing this, keep breathing.



800 × 450



FOR HELP OR QUERIES AFTER

THIS SESSION:

OneSizeFits1@psms.ac.uk